

★ Technical Data

Soft plastic (film / woven bag / fiber / rope) washing line

Type	LDW300	LDW500	LDW1000	LDW1500	LDW2000
Capacity (kg/h)	250-300	400-500	800-1000	1250-1500	1700-2000
Dimension: LxWxH (m)	29x10x5	35x12x6	50x12x6	70x15x6	90x15x6
Steam consumption (kg/h)	0-150	0-200	0-300	0-450	0-600
Chemical consumption (kg/h)	0-2	0-4	0-8	0-10	0-12
Energy consumption (kWh)	120	180	280	395	490
Installation power (kWh)	195	290	446	530	760
Man power (persons/shift)	3	3	4	4	4

Rigid plastic (HDPE / PP / PC / ABS / PS) washing line

Type	RPW500	RPW1000	RPW2000	RPW3000	RPW5000
Capacity (kg/h)	400-500	800-1000	1600-2000	2500-3000	4000-5000
Dimension: LxWxH (m)	35x10x5	50x12x6	70x12x6	100x15x6	120x20x6
Steam consumption (kg/h)	0-150	0-200	0-300	0-450	0-600
Chemical consumption (kg/h)	0-3	0-5	0-10	0-15	0-20
Energy consumption (kWh)	175	198	306	463	550
Installation power (kWh)	210	330	498	630	810
Man power (persons/shift)	3-5	3-8	3-10	3-12	3-12

WEEE (electronic waste) washing line

Type	WES1000	WES2000	WES3000	WES5000	WES10000
Capacity (kg/h)	850-1000	1700-2000	2550-3000	4250-5000	8000-10000
Dimension: LxWxH (m)	70x15x5	90x15x6	120x18x6	130x18x6	150x20x6
Steam consumption (kg/h)	0-3	0-5	0-10	0-15	0-20
Energy consumption (kWh)	130	170	260	365	423
Installation power (kWh)	195	280	432	580	695
Man power (persons/shift)	3-5	3-6	3-8	3-8	3-8



ABILITY

Thanks to innovative washing technology and high quality performance, KiTech intelligent recycling and washing system removes the most difficult contaminants from waste plastics, and provides high quality and purity washing results for customers.



STABILITY

Kitech washing system is available for 24 hours working non-stop operation. Optimized design and top brand components to each module. Which could minimize the downtime ratio and save the maintenance time. This ensures the maximum availability and highest productivity for user.



EFFICIENCY

Kitech washing system is designed in all details for efficiency improving. The modular design could simplify the planning and accelerate the implementation. The system have very low consumption values for electricity, water and labor. The operating costs and maintenance costs are absolutely reduced. Consistently the lowest investment costs and highest value creation.



MODULARITY

Kitech washing system is a flexible modular system. All elements required by any customer for different application could be combined freely. This design reduces planning, construction and assembly time effectively. And it's possible to adjust the system regard to technological modification and market changing. This makes the investment future-proofing.



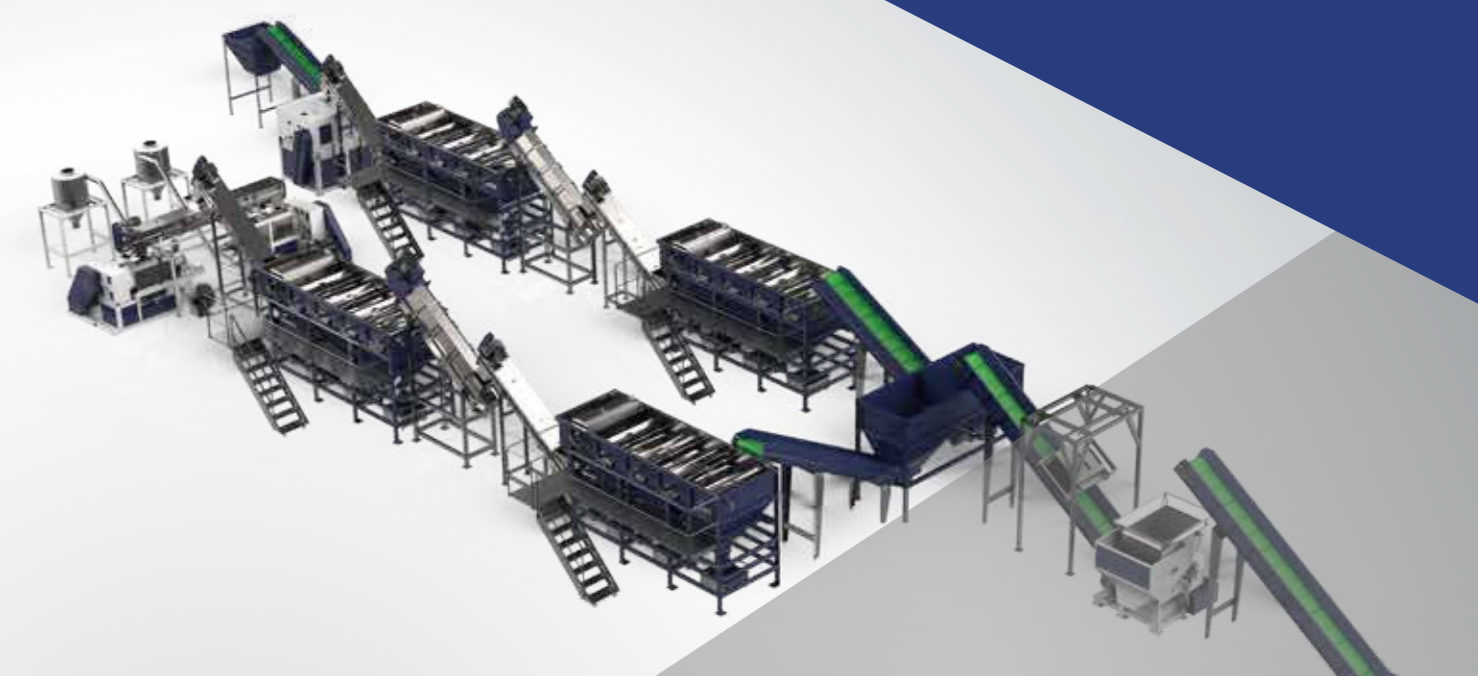
CONTROL

Automatic modular control of Kitech washing system reduces the labor operation, makes the whole system easier and more reliable to control, the remotes monitoring and maintenance are available for different production lines. The intelligent control has display for operating data, it also collects the data of the consumption and the capacity from production line. Which ensures the connection between the enterprises and the Internet, will improve the efficiency of enterprise management.



SERVICE

Kitech washing system is a flexible and customer-oriented recycling solution. All the components of the whole line is globally well-known brands, which ensures the reliable operation and serves your exact needs. Furthermore, Our engineers will partner with you for the whole project. Building design, overseas installation, commissioning and training are available. Machine warranty with spares in stocking and in-time delivery. Consistently quick and careful service in pre-sales and after-sales process.



Plastic Washing System

KITECH MACHINERY CO.,LTD

JIANGSU KITECH MACHINERY CO.,LTD

Email : info@kitechpm.com

Tel : +86-512-5862 0105

Fax : +86-512-5896 2531

Web : www.kitechpm.com

Add : No.7 Jiulong industry park, Jinfeng Town, Zhangjiagang City, Jiangsu, China

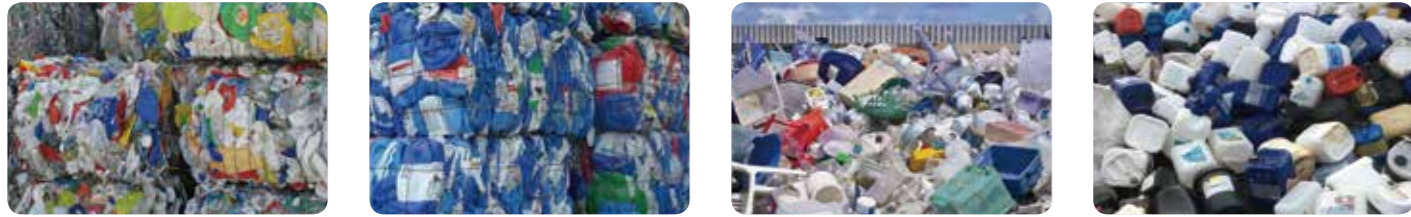


Process of Film / woven bag washing line



- 1 Feeding
- 2 Shredding
- 3 Crushing
- 4 Floating washing
- 5 Friction washing
- 6 Fine washing
- 7 Squeezing
- 8 Thermal drying
- 9 Packaging

Process of Rigid HDPE / PP washing line



- 1 Feeding
- 2 Bale breaking
- 3 Pre-processing
- 4 Sorting
- 5 Shredding/crushing
- 6 Pre-washing
- 7 Friction washing
- 8 Floating washing
- 9 Drying
- 10 Zig-zag separating
- 11 Color & materia/ sorting
- 12 Packaging

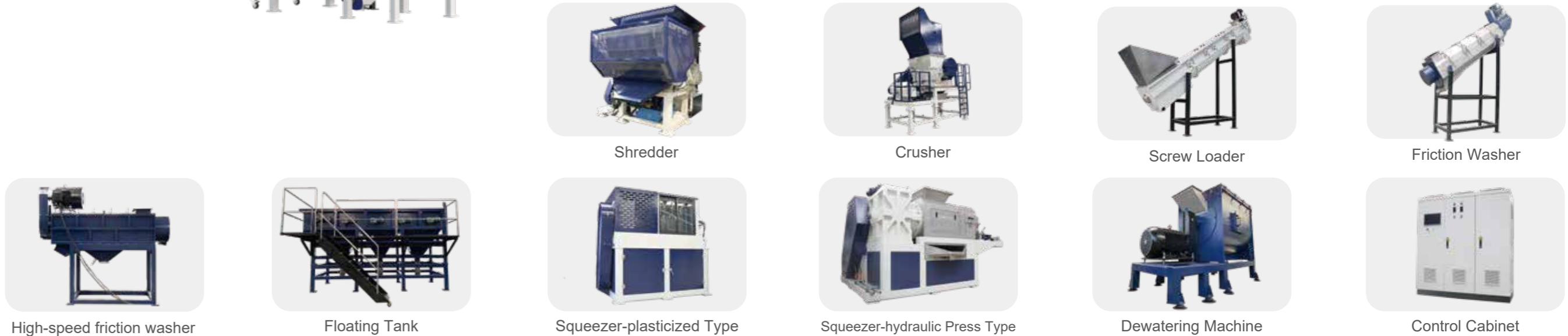
Process of Electronic waste washing line



- 1 Feeding
- 2 Shredding/Crushing
- 3 High salty water separating
- 4 Low salty water separating
- 5 Fresh water separating
- 6 Dewatering
- 7 Drying
- 8 Electrostatic separating
- 9 Packaging

Plastic Recycling Washing System

Plastic recycling washing system is one of the main recycling series of KiTech machinery. This system has smart modular design aiming at agricultural film, industrial packaging film, bag, blow molding packaging bottle / box, injection and electronic waste recycling. Including sorting, size reduction, metal removing, cold and hot washing, high efficiency friction washing and drying modular. Which can remove ferrous and nonferrous metals, sand, oil, glue, paper label and many other different contaminants efficiently. You can get a different module combinations design from KiTech according to your requirements and material's condition. In range of different raw materials, KiTech provides 300-10000 kg/h economy and high-level production lines with different configurations.



- Pre-processing modular**
 Pre-processing modular is freely consists of bale breaker, screen, pre-washer, sorter, metal detector, label remover, and some other equipments. It provides pre-treatment for the raw material.
- Size reduction modular**
 Large materials are processed into small pieces in this modular, which improves the washing result and makes the final product easy to packing.
- Washing modular**
 Dust, glue, label,oil and other impurities can be removed highly effective by washing module. This modular combines floating washing, hot washing, salty water separating, high-speed friction washing, low-speed friction, spraying, and some other washing equipments.
- Drying modular**
 Squeezing and drying treatment is used to remove the moisture in the material with low packing density. Mechanical dewatering treatment is used to process the material with high packing density to reduce energy consumption.
- Sorting modular**
 Near Infrared Spectrum, Aerodynamic principles material, and many other technology is used to separate material, color, and specific gravity to purify and sort products.
- Water treatment modular**
 Water treatment modular increase the water recovery. Powder and other vice products produced by the line can be collected and reused at the same time. Dissolved and undissolved contaminants in the water can be removed by physical solutions, chemical process and biochemical process. Decrease the operation cost, reduce the pollution effectively and help protect the environment.
- Monitor & control modular**
 Weighing and metering system helps you monitor the output and energy consumption of production line in real time under different materials and production conditions. All data can be connected to ERP system for quantitative assessment.Which ensures that we can update and maintain all user's systems for a long term.